

Industrial Rain Water Goods

# Helm Industrial Rain Water Goods



Visit: [www.helmengineering.co.za](http://www.helmengineering.co.za)  
Email: [marketing@helmeng.co.za](mailto:marketing@helmeng.co.za)  
Tel: 011 898 2900

Industrial Rain Water Goods

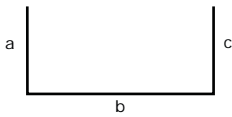


# Industrial Rain Water Goods

## Gutters

Helm Engineering is one of South Africa's largest manufacturers of industrial rainwater goods. An extensive range of standard gutters, downpipe's and accessories are manufactured. Helm can also manufacture custom made gutters, designed and manufactured to suit your specific project needs. All industrial rainwater goods can be manufactured from Hot Rolled, Galvanized, Aluminium, Stainless Steel, Zinc-Aluminium and Pre-painted material.

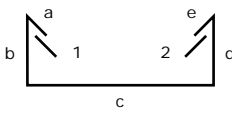
- An embossed finish is also available on request



Standard Box Gutter



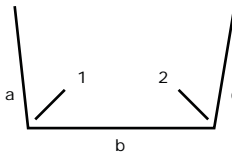
Box Gutter with Single Outfold



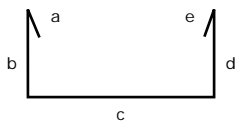
Box Gutter with Double Splashbacks



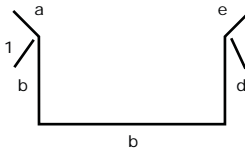
Box Gutter with Single Splashbacks



Box Gutter with Double Splay



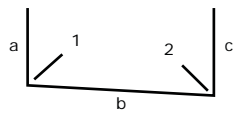
Box Gutter with Squashfolds



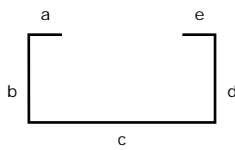
Box Gutter with Double Upturns



Box Gutter with Single Upturns



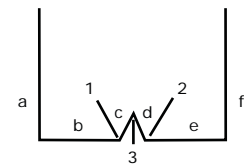
Angled Box Gutter



Box Gutter with Double Infolds



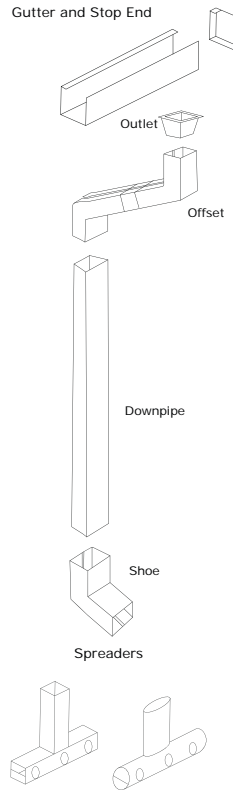
Box Gutter with Double Outfolds



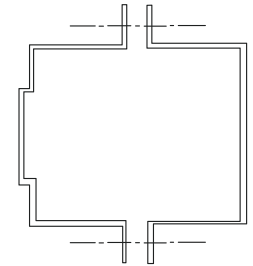
Box Gutter with 'V' Stiffening Rib

## Downpipes and Accessories

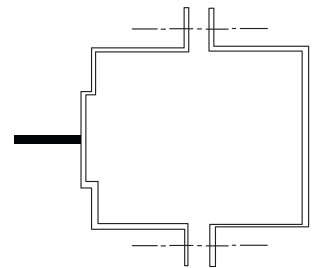
Gutter and Stop End



Holderbat



Spiked Holderbat



- **Gutters** are attached to the eaves of a roof and are designed to do one thing--channel water away from the foundation--and they're critical to protecting the structural integrity of your house. But in order for gutters to do their job properly, they have to be kept in shape and free of clogs, holes, and sags. Installing gutters around the eaves of your home could save you a lot of time and money in the long run by preventing water damage to your house.
- **Downpipe** is a vertical pipe for carrying rainwater from a rain gutter to ground level. There the water is directed to a sewer, rainwater harvesting, or let into the ground through seepage.
- **Gutter stop end** is the fitting that attaches to and closes off the end of the gutter.
- **Gutter outlet** an enlargement to receive rainwater from the gutter. The water travels down the gutters, into the outlet and down the downpipe.
- **Downpipe shoe** is the foot of a downpipe, a short fitting with a bend to discharge the rainwater clear of the building.
- **Downpipe spreaders** are a common method of partially re-distributing rainwater from a primary roof to a secondary roof. In order to spread the water, a series of small holes is generally employed. An alternative is to use a small box gutter running from the downpipe outlet across the secondary roof and into the gutter.
- **Downpipe offsets** are used when there is an overhang on the roof. To convey the water from the eaves to the downpipe which is fixed to the wall.

**PLEASE NOTE:** Due to our ongoing research and development programme, we reserve the right to supply products which may differ slightly from those illustrated and described in this brochure.

Head Office, Isando, Kempton Park, Gauteng

Address:  
General Enquires:  
Tel:

Corner Barlow & Quality Roads, Isando  
Email: marketing@helmeng.co.za  
+27 (0) 11 898 2900