

GRS PV Clamps

GRS PV Clamps

☞ Klip-Tite

☞ Klip-Lok

☞ Brownbuilt

☞ Zip-Tek

ROOFING LIKE NO OTHER

Talk to **THE SMART ROOF PEOPLE**
www.globalroofs.co.za
marketing@globalroofs.co.za



GRS PV Clamps



GRS
GLOBAL ROOFING SOLUTIONS

BrownBuilt | HH Robertson



Solar Clamp for Klip-Tite and Klip-Lok: GRS KT-PV Clamp™

A 75mm structural clamping component, manufactured from aluminium, suited to fit the GRS Klip-Tite and Klip-Lok profiles. The clamp will include hardware manufactured from stainless steel; this includes two clamping bolts and one adapter bolt, all to be M8 Stainless steel socket cap screws. The KT-PV Clamp™ has a non-abrasive clamping action and is compatible with most common coated roofing materials, except copper. It is available in three assembly options (M8 stud, M8 threaded hole or M8 slotted hole along the length of the clamp) to suit various rail-mounted PV systems.

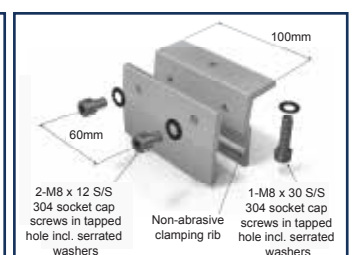
The bracket must only be fitted to the center ribs of sheets and not at the side lap of the sheets. The bracket must not be fitted directly over the sheeting clips (at purlin) but a minimum of 100mm away. If the bracket is directly over the sheeting's fixing clip, it will interfere with the thermal expansion action between the sheeting's clip and the sheet. The M8 cap screws are to be torqued to 15Nm.



Solar Clamp for Brownbuilt: GRS BB-PV Clamp™

A 100mm structural clamping component, manufactured from aluminium, suited to fit GRS Brownbuilt profile. The clamp will include hardware manufactured from stainless steel; this includes two clamping bolts and one adaptor bolt, all to be M8 stainless steel socket cap screws. The BB-PV Clamp™ has a non-abrasive clamping action and is compatible with most common coated roofing materials, except copper. It is available in three assembly options to suit various rail-mounted PV systems. The mounting system allows for ease of installation and a sufficient air gap for PV Panels.

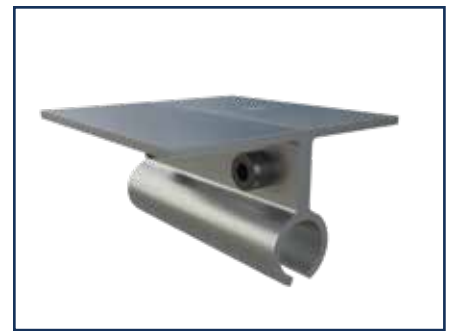
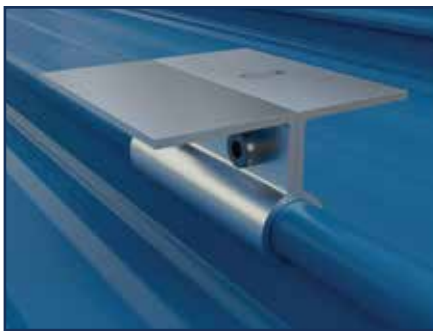
The BB-PV clamps should be installed only on the side lap ribs. No clamps must be installed on centre ribs. The bracket must not be fitted directly over the sheeting clips (at purlin) but a minimum of 100mm away. If the bracket is directly over the sheeting's fixing clip, it will interfere with the thermal expansion action between the sheeting's clip and the sheet. The M8 cap screws are to be torqued to 15Nm.



Solar Clamp for Zip-Tek: GRS ZT-PV Clamp™

A 100mm structural clamping component, manufactured from aluminium, suited to fit GRS Zip-Tek profile. The clamp will include hardware manufactured from stainless steel; this includes two clamping screws M6 stainless steel socket cap screws with spring washer and nut. The ZT-PV Clamp™ has a non-abrasive clamping action and is compatible with most common coated roofing materials, except copper. It is supplied with one M8 slotted hole for fixing of PV system.

The ZT-PV clamps must not be fitted directly over the sheet's fixing halter (at purlin) but a minimum of 100mm away. If the bracket is directly over the sheeting's fixing halter this will interfere with the thermal expansion action between the sheeting's halter and the sheet.



NOTE: Acceptability of drainage from an upper to lower surface should be taken into account when components like PV panels are attached to sheeting to ensure that the sheeting is not compromised

Upper surface \ Lower surface	Galv	Galv +paint	Al/Zn	Al/Zn+ paint	Al	Stainless steel	Copper	Lead	Fiber cement & Cement Tiles	Slate & Glazed tiles	Glass & Plastic
Galvanized	Yes	No	No	No	No	No	No	Yes	Yes	No	No
Galv+paint	Yes	Yes	Yes	Yes	Yes	No	No	Yes	Yes	Yes	Yes
Al/Zn	Yes	Yes	Yes	Yes	Yes	Yes	No	No	Yes	Yes	Yes
Al/Zn + paint	Yes	Yes	Yes	Yes	Yes	Yes	No	No	Yes	Yes	Yes
Aluminium	Yes	Yes	Yes	Yes	Yes	Yes	No	No	Yes	Yes	Yes
Stainless steel	Yes	Yes	Yes	Yes	Yes	Yes	Yes	Yes	Yes	Yes	Yes

Al/Zn=Aluminium/zinc





Please visit our website or contact GRS for standard flashing details

Isando	Tel: +27 (0) 11 898 2900	Bloemfontein	Tel: +27 (0) 51 432 3724	Exports	Tel: +27 (0) 11 898 2900
Cape Town	Tel: +27 (0) 21 521 1900	Nelspruit	Tel: +27 (0) 13 492 0746/7	Botswana	Tel: +267 (002) 310 5761/2
Durban	Tel: +27 (0) 31 538 0940	Polokwane	Tel: +27 (0) 15 293 0313	Namibia	Tel: +264 (002) 61 263 890
Port Elizabeth	Tel: +27 (0) 43 731 1826	Rustenburg	Tel: +27 (0) 14 596 6121		
East London	Tel: +27 (0) 43 731 1826	Upington	Tel: +27 (0) 54 332 1657		



@GRSRoofs

e.&o.e