

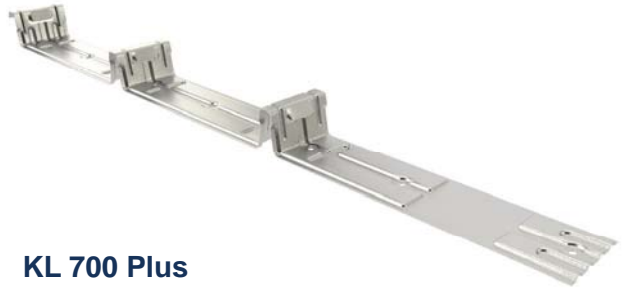
Improved Clips

Improved Clips for Klip-Lok™ & Klip-Tite™

ROOFING LIKE NO OTHER

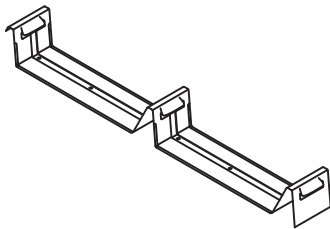


KL 700

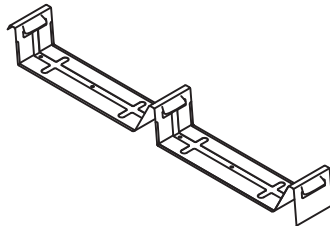


KL 700 Plus

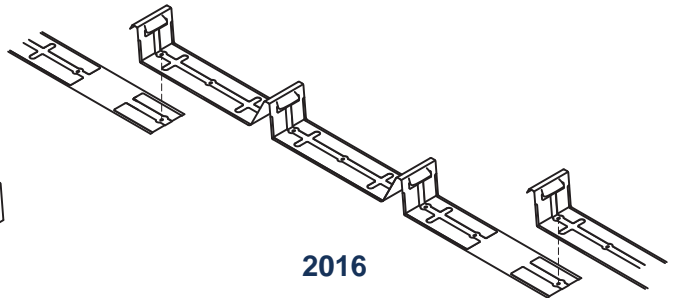
Evolution of the Clip



1997



2012



2016

Benefits

- Extended base allows for a more accurate installation:
 - 700mm cover width
 - Clips are installed in a straight line when using spacer hole
- Extended base eliminates insulation bulge when used on blanket type insulation.
- Extra base stiffeners allow for improved stability on the purlin, LSF battens or on "Ash Grid" type spacer systems.
- Additional pilot holes have been added for extra fasteners when using thick insulation, adding more stability.

Advantages

- Improved mechanical grip due to the re-development of the connector spur
- Improved wind loading capabilities
- Newly designed and more pronounced stiffeners have improved the rigidity in key areas

Talk to **THE SMART ROOF PEOPLE**
www.globalroofs.co.za
marketing@globalroofs.co.za

GRS Clips 08/19



GRS

GLOBAL ROOFING SOLUTIONS

BrownBuilt | HH Robertson



Number fasteners with New KL700-Plus Clip

The suggested fastener sizes are shown, recommended for 1mm to 4.5mm cold rolled purlins
 Read in conjunction with Table 11.1 on Page 27 of GRS Installation Manual re.

	Klip-Tite™	Klip-Lok 700™	
No Insulation	Wafer Tek #10 - 16 x 16 lg 	Wafer Tek #10 - 16 x 16 lg 	N/A
Radiant Barriers (Heat reflective Foil/ Laminate)	Wafer Tek #10 - 16 x 16 lg 	Wafer Tek #10 - 16 x 16 lg 	N/A
50mm thick Insulation Blanket 12kg/m ³	Wafer Tek #10 - 16 x 22 lg 	Wafer Tek #10 - 16 x 22 lg 	N/A
75mm thick Insulation Blanket 12kg/m ³	Wafer Tek #10 - 16 x 22 lg <p>Fasteners Sequence →</p>	Wafer Tek #12 - 14 x 65 lg <p>Packer 25mm thick x 75mm wide x 2450 lg</p>	Note: Fix Packer down first with 2/ #12 x85 lg Wafer Tek's per packer ± 600mm from end & ± 1250 centres
100mm thick Insulation Blanket 12kg/m ³	Wafer Tek #10 - 16 x 22 lg <p>Fasteners Sequence →</p>	Wafer Tek #12 - 14 x 65 lg <p>Packer 25mm thick x 75mm wide x 2450 lg</p>	Note: Fix Packer down first with 2/ #12 x85 lg Wafer Tek's per packer ± 600mm from end & ± 1250 centres
115mm thick Insulation Blanket 12kg/m ³	Wafer Tek #10 - 16 x 45 lg <p>Fasteners Sequence →</p>	Wafer Tek #12 - 14 x 65 lg <p>Packer 30mm thick x 75mm wide x 2450 lg</p>	Note: Fix Packer down first with 2/ #12 x85 lg Wafer Tek's per packer ± 600mm from end & ± 1250 centres
135mm thick Insulation Blanket 12kg/m ³	Wafer Tek #10 - 16 x 45 lg <p>Fasteners Sequence →</p>	Wafer Tek #12 - 14 x 85 lg <p>Packer 40mm thick x 75mm wide x 2450 lg</p>	Note: Fix Packer down first with 2/ #12 x85 lg Wafer Tek's per packer ± 600mm from end & ± 1250 centres

Note:

- Above do not apply where insulation density exceeds 12kg/m³.
- Fasteners to be correct specification and length to allow at least 3 threads to protrude below the steel purlin.
- The above does not apply when light steel frame purlins with thickness of less than 1mm are used.