

# ARIES : Multifunctional Vertical Mounted Ventilator



Visit: [www.helmengineering.co.za](http://www.helmengineering.co.za)  
Email: [marketing@helmeng.co.za](mailto:marketing@helmeng.co.za)  
Tel: 011 898 2900

Helm ARiES

 **helm**  
MANUFACTURING INGENUITY

# Helm ARiES

## Features

- Natural day-to-day ventilation
- Natural smoke exhaust in case of fire
- No fan power consumption required
- Aesthetic

The Aries is a multifunctional wall-mounted ventilator in which bird screens, burglar bars and flanges can be incorporated in any combination. It can be manufactured in Zinc Aluminium or galvanised and is available in a variety of colours.

## Specifications

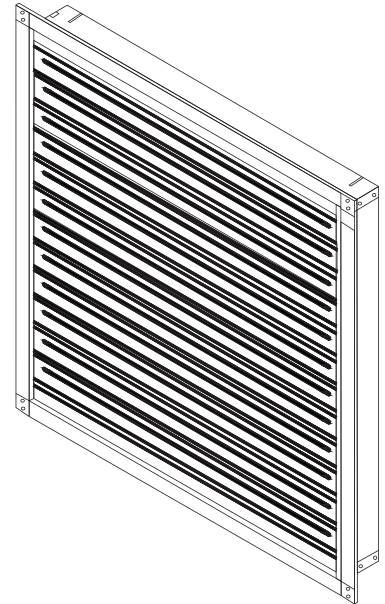
- Material: ZincAL or Galvanised
- Colours: Standard Chromadek®, Standard COLORPLUS®, Standard RAL
- Opening mechanism: 24V or 230V spring return actuator (failsafe)
- Fusible link temperatures: 74°C, 100°C, 138°C, 182°C or 232°C
- Top flange of 70 mm possible
- Optional: bird mesh—burglar bar

## Aerodynamic Free Area - m<sup>2</sup>

ARiES Code	Standard Ventilator	With Burglar Bar	With Bird Mesh	With Burglar Bar and Bird Mesh
A4	0.53	0.50	0.46	0.44
A5	0.63	0.60	0.54	0.52
A6	0.73	0.70	0.63	0.61
A7	0.83	0.79	0.72	0.69
A8	0.93	0.89	0.81	0.77
A9	1.03	0.99	0.89	0.89
A10	1.13	1.08	0.98	0.94
A11	1.23	1.18	1.07	1.03
A12	1.33	1.28	1.16	1.11
B4	0.62	0.60	0.54	0.52
B5	0.74	0.71	0.64	0.62
B6	0.86	0.83	0.75	0.72
B7	0.98	0.94	0.85	0.82
B8	1.10	1.05	0.96	0.92
B9	1.22	1.17	1.06	1.02
B10	1.34	1.28	1.16	1.12
B11	1.46	1.40	1.27	1.22
B12	1.57	1.51	1.37	1.32
C4	0.77	0.74	0.67	0.64
C5	0.92	0.88	0.80	0.77
C6	1.06	1.02	0.93	0.89
C7	1.21	1.16	1.05	1.01
C8	1.36	1.31	1.18	1.14
C9	1.51	1.45	1.31	1.26
C10	1.65	1.59	1.44	1.38
C11	1.80	1.73	1.57	1.50
C12	1.95	1.87	1.70	1.63

## Performances and Classification

- Aerodynamic free area: table below
- Measured Throat Area: table on the following page
- Reliability: Re100
- Low ambient temperature: T(00)
- Wind load: WL 2300
- Resistance to heat: B 300
- Reaction to fire classification (steel): A1

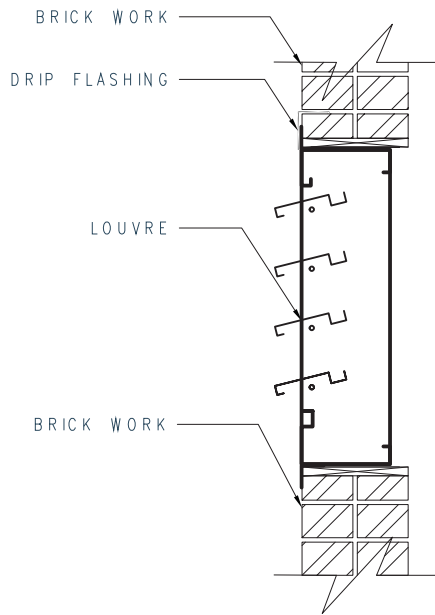


# Helm ARiES

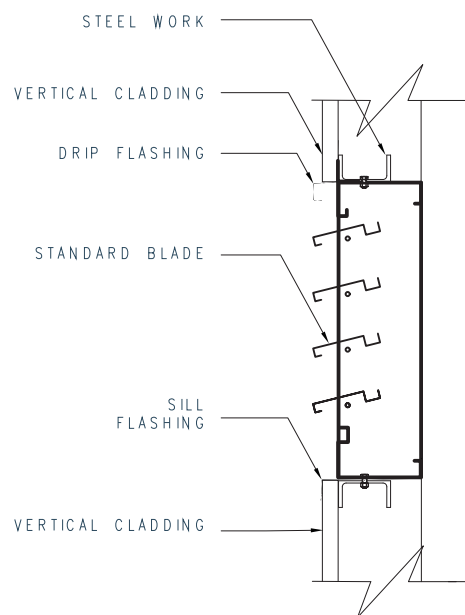
Measured Throat Area- m<sup>2</sup>

Length	Height	4 Blades	5 Blades	6 Blades	7 Blades	8 Blades	9 Blades	10 Blades	11 Blades	12 Blades
		700 mm	834 mm	968 mm	1102 mm	1236 mm	1370 mm	1504 mm	1638 mm	1774 mm
A	1316 mm	A4 0.92	A5 1.10	A6 1.27	A7 1.45	A8 1.63	A9 1.80	A10 1.98	A11 2.16	A12 2.33
B	1616 mm	B4 1.13	B5 1.35	B6 1.56	B7 1.78	B8 2.00	B9 2.21	B10 2.43	B11 2.65	B12 2.86
C	2000 mm	C4 1.40	C5 1.67	C6 1.94	C7 2.20	C8 2.47	C9 2.74	C10 3.01	C11 3.28	C12 3.54

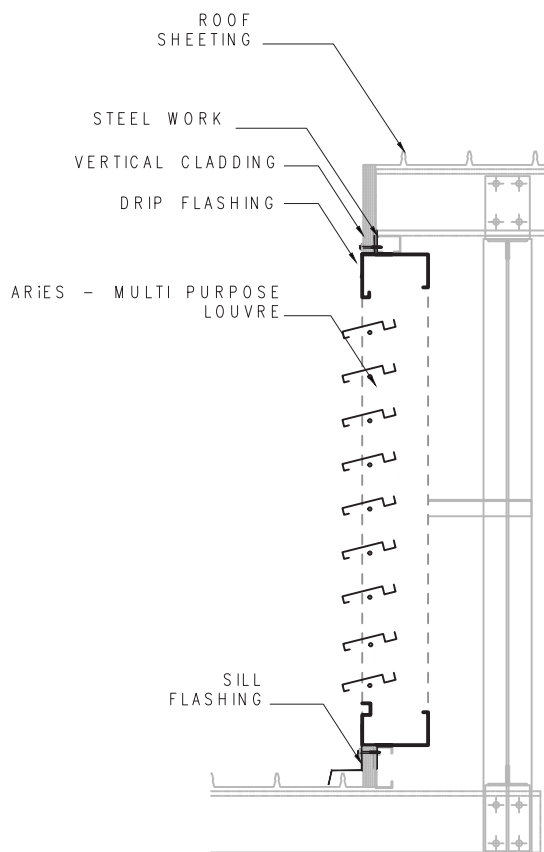
Typical brick-wall installation detail



Typical steel-wall installation detail



Typical Aries in monitor





**Head Office, Isando, Kempton Park, Gauteng**

**Address:** Corner Barlow & Quality Roads, Isando  
**General Enquires:** Email: [marketing@helmeng.co.za](mailto:marketing@helmeng.co.za)  
**Tel:** +27 (0) 11 898 2900

